


4 VIE AC-evo

technical sheet



01-2013

evoLINE

	Producer	1	Armanni Carrelli Elevatori Srl											
	Model	2	4Vie AC-evo 125/16	4Vie AC-evo 155/16	4Vie AC-evo 200/16	4Vie AC-evo 125/25	4Vie AC-evo 155/25	4Vie AC-evo 200/25	4Vie AC-evo 125/30	4Vie AC-evo 155/30	4Vie AC-evo 200/30	4Vie AC-evo 125/35	4Vie AC-evo 155/35	4Vie AC-evo 200/35
	Drive	3	electric			electric			electric			electric		
	Operator Type	4	pedestrian			pedestrian			pedestrian			pedestrian		
	Load Capacity	5 Kg	1200	1500	2000	1200	1500	2000	1200	1500	2000	1200	1500	2000
	Load centre distance	6 mm	450			450			450			450		
	Weight (battery excl.)	7 Kg	669	669	-	700	700	-	780	780	-	805	805	-

4 VIE AC-evo			125/16	155/16	200/16	125/25	155/25	200/25	125/30	155/30	200/30	125/35	155/35	200/35	
BASIC DIMENSIONS	8	Fork dimensions	s/N/l	65/160/950			65/160/950			65/160/950			65/160/950		
	9	Distance between fork-arms	M	350/1300			350/1300			350/1300			350/1300		
	10	Overall width	B	1620	1620	1620	1620	1620	1620	1620	1620	1620	1620	1620	1620
	11	Overall length	L	1780	1780	1805	1810	1810	1835	1810	1810	1835	1810	1810	1835
	12	Length to face of forks	L2	840	840	865	860	860	885	860	860	885	860	860	885
	13	Distance from front half axle	X	310	310	310	330	330	330	330	330	330	330	330	330
	14		X2	175	175	175	175	175	175	175	175	175	175	175	175
	15	Closed mast height	h1	1990	1990	1990	1740	1740	1740	1990	1990	1990	2240	2240	2240
	16	Free lift	h2	1450	1450	1450	200	200	200	200	200	200	-	-	-
	17	Lift	h3	1600	1600	1600	2500	2500	2500	3000	3000	3000	3500	3500	3500
	18	Height, mast extended	h4	2070	2070	2070	2970	2970	2970	3470	3470	3470	3970	3970	3970
	19	Height of tiller in drive position (min/max)	h14	1440/895			1440/895			1440/895			1440/895		
	20	Height, lowered	h13	70			70			70			70		
	21	Aisle width*	J	2200			2200			2200			2200		
22	Turning radius	WA	1510			1510			1510			1510			
PERFORMANCES	23	Travel speed, with/without load	Km/h	5.0 / 5.5			5.0 / 5.5			5.0 / 5.5			5.0 / 5.5		
	24	Lift speed, with/without load	m/sec	0.09/0.15	0.08/0.15	0.06/0.09	0.09/0.15	0.08/0.15	0.06/0.09	0.09/0.15	0.08/0.15	0.06/0.09	0.09/0.15	0.08/0.15	0.06/0.09
	25	Lowering speed, with/without load	m/sec	0.09/0.1	0.1/0.1	0.1/0.08	0.09/0.1	0.1/0.1	0.1/0.08	0.09/0.1	0.1/0.1	0.1/0.08	0.09/0.1	0.1/0.1	0.1/0.08
	26	Max. gradeability, with/without load	%	-			-			-			-		
	27	Service brake		electric			electric			electric			electric		
WHEELS, CHASSIS	28	Drive/castor/fork wheel		rubber/polyurethane/polyurethane+nylon											
	29	Wheels, n° front/rear (x=driven wheels)		1x+2 / 4			1x+2 / 4			1x+2 / 4			1x+2 / 4		
	30	Wheel size, front	mm	ø250x76			ø250x76			ø250x76			ø250x76		
	31	Additional Wheel size, front	mm	ø125x50			ø125x50			ø125x50			ø125x50		
	32	Wheel size, rear	mm	ø125x50			ø125x50			ø125x50			ø125x50		
	33	Wheelbase	Y	1285	1285	1285	1305	1305	1305	1305	1305	1305	1305	1305	1305
	34	Track width, front	B10	750	750	750	750	750	750	750	750	750	750	750	750
	35	Track width, rear	B11	1500	1500	1500	1500	1500	1500	1500	1500	1500	1500	1500	1500
	36	Ground clearance, with load, below mast	mm	30			30			30			30		

ELECTRIC MOTOR	37	Ground clearance, centre of wheelbase	mm	90	90	90	90	90							
	38	Drive motor	KW	1.2	1.2	1.2	1.2	1.2							
	39	Traction technology		AC technology	AC technology	AC technology	AC technology	AC technology							
	40	Lift motor	KW	2.2	2.2	2.2	2.2	2.2							
	41	Battery voltage/nominal capacity (min.)	V / Ah	24 / 160	24 / 160	24 / 160	24 / 160	24 / 160							
	42	Battery weight (min.)	Kg	150	150	150	150	150							
	43	Battery charger voltage/nominal capacity	V / A	24 / 30	24 / 30	24 / 30	24 / 30	24 / 30							
4 VIE AC-evo				125/16	155/16	200/16	125/25	155/25	200/25	125/30	155/30	200/30	125/35	155/35	200/35

* not including the space for the operator

** Armanni Carrelli Elevatori reserves the right to make changes to specifications and dimensions without advance notice. The data provided are subject to tolerances.

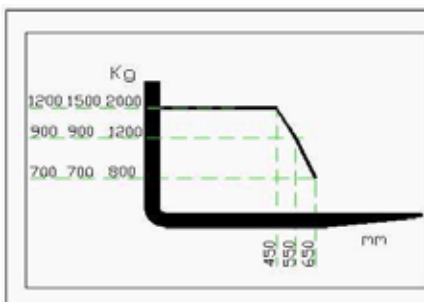
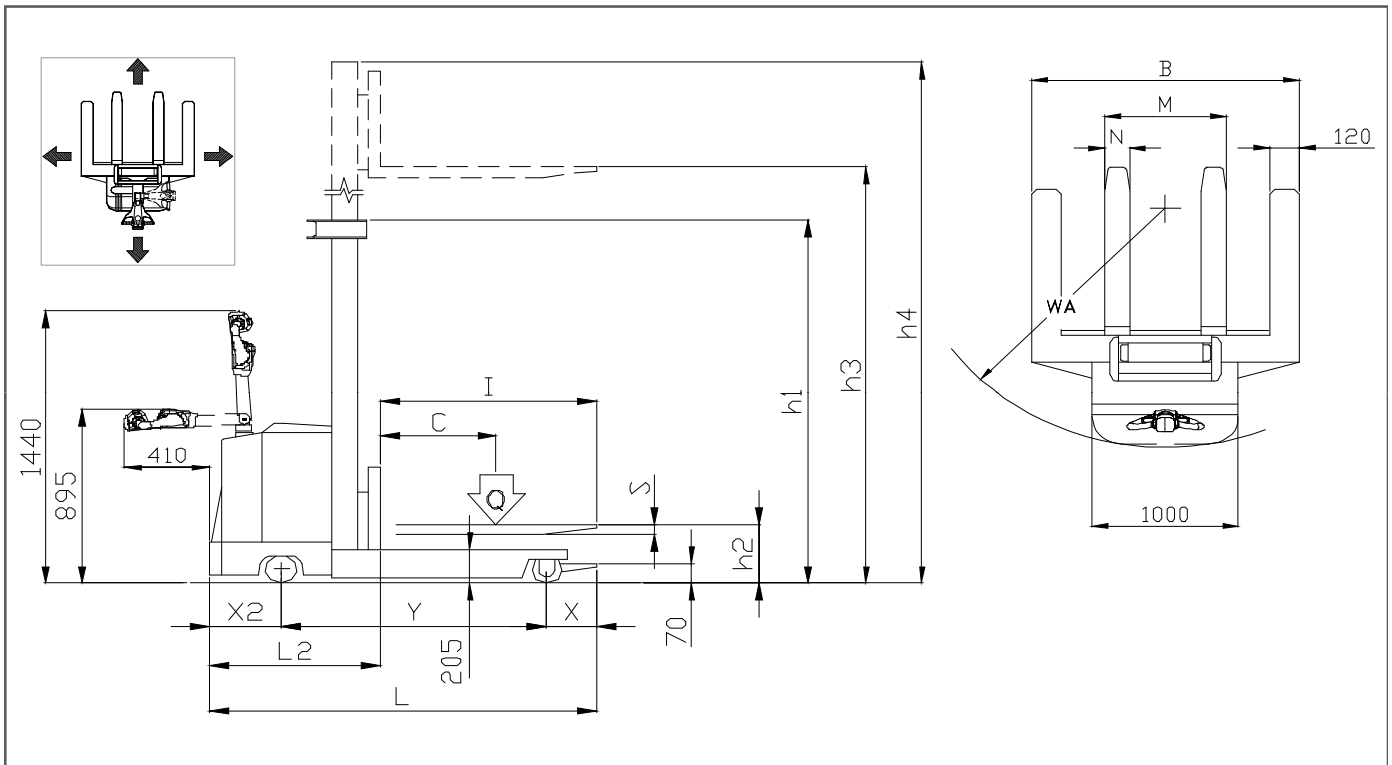


Diagram of maximum loads regarding the lifts.

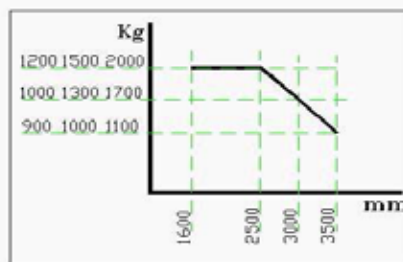
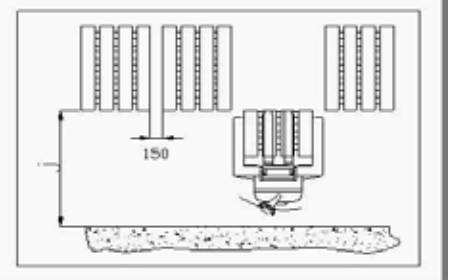


Diagram representing the position variation of the load barycenter with the variation of the same.



Storage corridor.



AUTOSAS®

komunální a manipulační technika

Auto SAS s.r.o.

IČ: 49679139, DIČ: CZ49679139

517 01 Solnice, Rychnovská 577

WWW.AUTOSAS.CZ